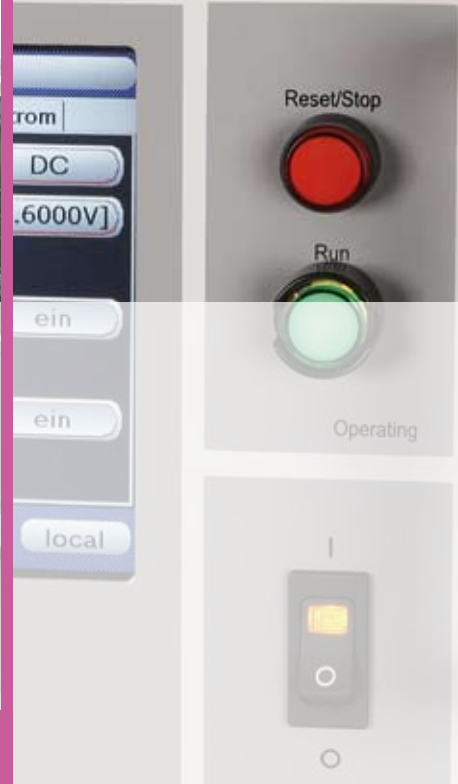




Programmable High Voltage Tester
www.elabo.com



TestSystems

Quality - without butts

Measuring
Testing
Automating



ELABO

euromicron group



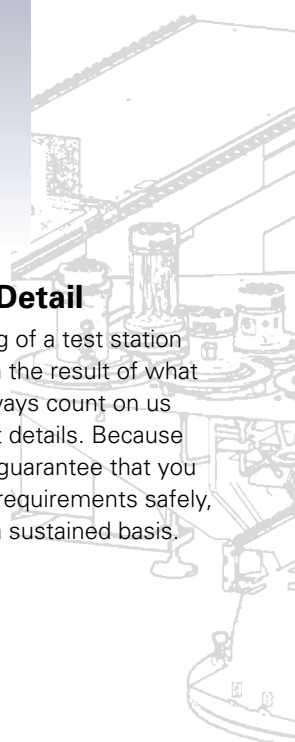
■ Partnership without Boundaries

Since the company was founded in 1972, we have been accumulating experience that has made us what we are today: a recognized partner in the industry as well as of testing and certification centers dedicated to safety and functional testing of household appliances, electrical components and solar energy systems. This wealth of experience helps us to find the perfect solution for your requirements – every time.



■ Solutions in Detail

The perfect functioning of a test station or test system is often the result of what is unseen. You can always count on us to tend to the smallest details. Because that's the only way to guarantee that you can fulfill your testing requirements safely, economically, and on a sustained basis.



■ Individual Workstation Solutions and Complex Testing Networks

Various requirements necessitate flexibility. This is why we have developed a modular product range with which we can quickly and economically make customized solutions available - from individual test devices in housings to table superstructures with integrated test equipment to automated systems and ERP connections for mass production.

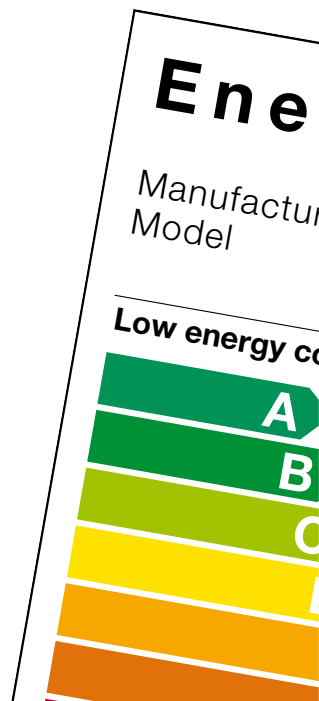


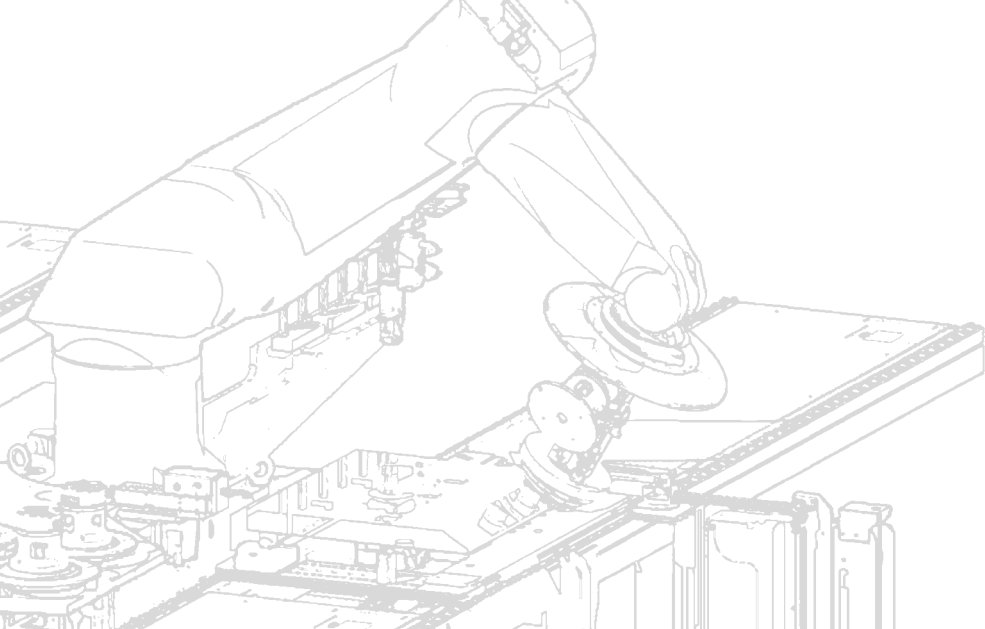
■ Intelligent Superior Design

Our devices are characterized by being able to adapt flexibly to wide-ranging requirements, by their optimal user-friendliness (e.g. with the use of modern TouchMe user interfaces), and by their robust construction, which guarantees long life for equipment in daily use.

■ Modularity Means Method

Greatly varying requirements necessitate adaptable solutions. One of the essential advantages of our products is their consistently modular structure, which makes it possible to accomplish all required test tasks flexibly. Your benefit: economically optimal test equipment and systems that are tailored to your actual needs.





■ Turnkey Solutions

We construct and manufacture complete mounting and test systems that not only facilitate typical electrical tests but also allow firmware to be programmed inline as part of the value-added chain, and also include both visual and mechanical function testing. In addition, flexibly designed assembly workstations and mobile systems are available with Elabo's TaMas and TaMo programs.

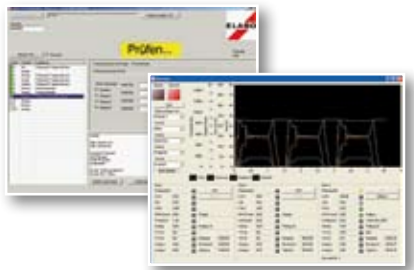
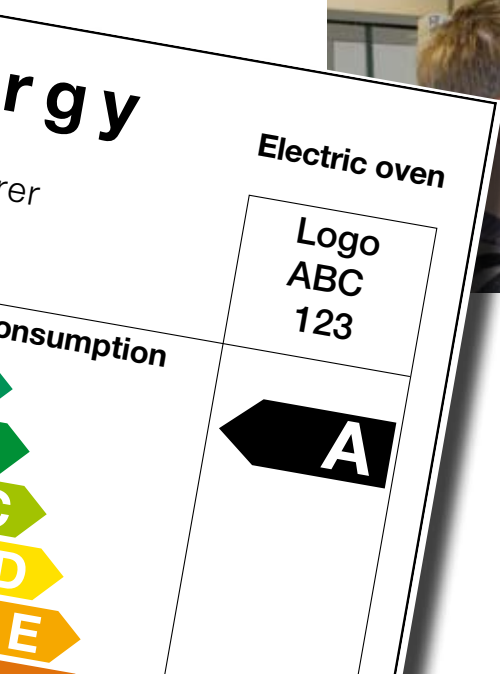


■ Engineering and Production

We offer you advice tailored to your requirements, using modern EDP applications so that you can see movements and processes in a simulated scenario prior to manufacture, for instance. In this way, we prevent collisions in the planning phase. Our consistently including mostly regional manufacturing specialists in our quality-assurance system guarantees the high-quality execution of systems "Made in Germany." That's what we stand for!

■ Powerful Intelligent Software Solutions

Our basic software ensures the performance and documentation of all required tests and can be expanded to meet varying requirements in a modular fashion. All tasks, from manual test stations to complex, fully automatic test systems, including the integration of existing EDP structures, can be optimally fulfilled in this way. As pioneers in the field of PC-controlled measurement and test systems, Elabo has many years of experience in this area. We have been offering system solutions controlled completely by software since 1982.



■ Comprehensive Service

Our products stand up to the highest quality requirements and serve as the industry benchmark. Nevertheless, malfunctions may occur in rigorous daily use. If they do, we're there for you – at your site, if necessary. What is also a matter of course for us: regular calibration and maintenance service as well as dummy test routines that can be implemented into the systems.



Advice, manufacturing, commissioning: Since 1972, Elabo's customers have been relying on sophisticated solutions from Crailsheim when it comes to equipping general-purpose and special rooms as well as procuring testing equipment.

Expertise in electrical and mechanical engineering and in many other fields – these are the basics that allow Elabo to custom design and execute functions and applications, as well as mass-produced products can be brought to market at a favorable price/performance ratio.

Quality right from the start: Elabo products are designed for years of use. With services such as test equipment recalibrating we support our customers throughout the entire product life cycle.



euromicron group

Elabo GmbH
a company of the
euromicron Group
Rossfelder Str. 56
74564 Crailsheim
Germany
Tel.: +49 (0)7951-307-0
Fax: +49 (0)7951-307-66
info@elabo.de
www.elabo.de
www.elabo-testsysteme.de

Elabo EducationSystems

Elabo offers complete special rooms for electrical engineering, mechatronics, IT and related fields: tables, superstructures with power supply, as well as measuring and test devices, cabinets and chairs.



Elabo LaboratorySystems

Whether it's pneumatic measuring devices, ESD tables, or software for archiving measured results, Elabo products are used in research and development as well as in the construction of prototypes.



Elabo AssemblySystems

Formed systems with extremely robust feet, transverse bars, roller belts: Elabo designs workspaces for manual and semi-automated production. Also supplied with integrated test systems.



Elabo ProcessControlSystems

In data processing centers, security control centers or in power stations, whether it's consoles with operating controls or large-screen display systems, Elabo plans and realizes rooms for process monitoring.



Elabo TestSystems

Measuring. Testing. Automating. Elabo reproduces test situations for its customers down to the last detail in everything from high-voltage test equipment to highly complex test systems with multipurpose adapters.



Elabo WorkshopSystems

From workbenches to documentation test stations: Elabo reproduces modern maintenance tasks, from "simple" tables to software to measurement data storage.

