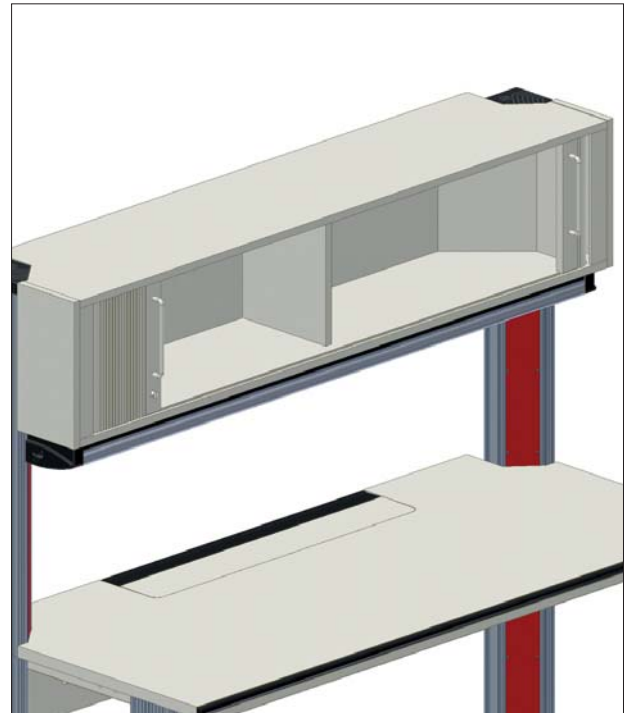


Article No. K4-...

# Primus One System Shelf Units



Shelf unit rack



Roller shutter rack

## Highlights

- Storage space directly at the workplace
- Suitable for DIN A4 file folders
- Shelf unit version additionally with a height-adjustable shelf
- Roller shutter rack with lock and hinged key, optionally with central release capability
- Option to integrate LED lighting
- Option to integrate organization panel

### Scope of delivery

System shelf unit, complete, with system carrier

### Accessories

Organization panel with lighting

Article No. K4-...

## Primus One System shelf units

### Technical Data

Corpus		
Thickness	19mm	
Finish	Melamine-coated, resistant to organic solvents, weak acids, gasoline and oil	
Color	Light gray RAL 7035 Corpus volume-conductive	
ESD variant		
Design according to	DIN EN 61340-5-1 Part 5-1	
Dimensions	Width in mm	
Widths	1200, 1500, 1600, 1800, 2000mm	
Depths	Outside	375mm
	Inside	356 / 296mm (in case of roller shutter shelf unit)
Height	Outside	372 / 432mm (with system carrier)
	Inside	330mm