

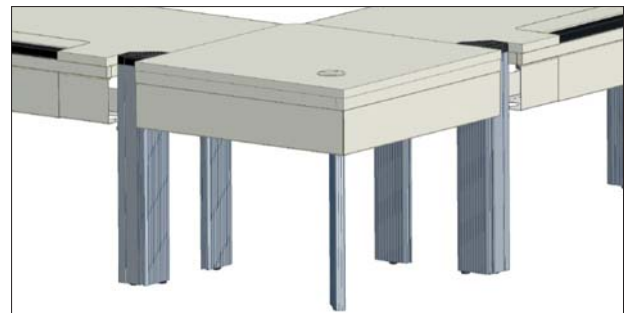
Article No. K1-...

Primus One

System Corner Panels



With cable grid channel



With cable grid channel and facing panel

Highlights

- Corner panels suitable for legless corner combinations with system tables
- Available as standard in various angles
- Asymmetric variants for connecting system tables of different table depths
- 90° corner panels with additional support leg for increased stability
- Simple cable routing in variants with cable grid channel
- Design variants with facing panels for visual harmonization with system tables
- ESD variant for EPA systems

Scope of delivery

Corner panel, complete, with installation materials, 90° corner panels with support leg

Variants

- Standard
- Standard with cable grid channel
- Standard with cable grid channels and facing panel

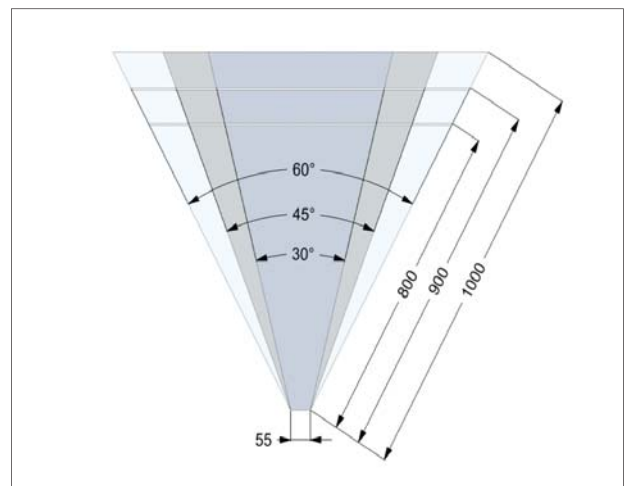
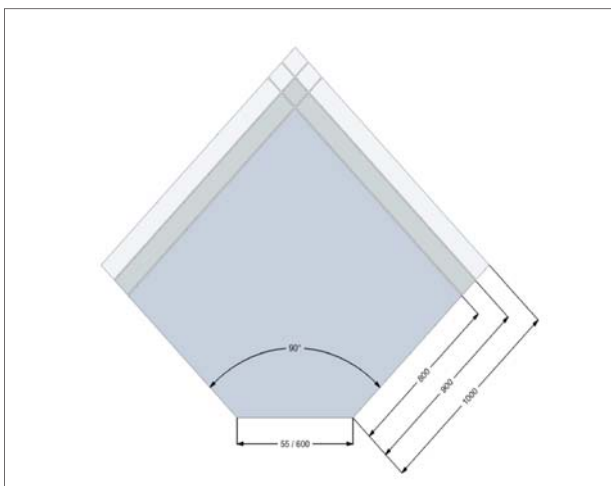
Article No. K1-...

Primus One System corner panels

Technical Data

Table top	
Thickness	30mm
Front edges	S-edge strip 3mm thick F-Flexi-Line edge, exchangeable
Finish	HPL laminate 0.8mm, glare-free, abrasion-resistant to EN 438, heat-resistant for short period
Color	Light gray RAL 7035
Support leg for 90° corners	
Dimensions	Height 750mm
Cable grid channel	
Dimensions	Width 100mm, Height 35mm
Loading capacity	
Max. total weight	80kg surface load
ESD variant	
Table top	As standard design, but also volume-conductive
Design according to	DIN EN 61340-5-1 Part 5-1
Dimensions	
Front edge	55 / 600mm
Depths	800 / 900 / 1000mm
Angles	30°, 45°, 60°, 90°
Height (support leg)	750mm

Design variants



Article No. K2-...

Primus One

System Under-table Cabinets



K2-1A



K2-4A



K2-1C



K2-4C



K2-1E



K2-4E



K2-1F



K2-4F



K2-1J/K2-1K



K2-4J/4K



K2-1S/K2-1R



K2-4S/4R

Highlights

- Handle-less fronts
- All drawers with 110% full pullout
- Easy-running metal drawers with soft closing feature
- Optionally convertible to roller container
- Central lock with hinged key, optionally with locking system capability
- Tamper-proof pullout stop
- Extensive range of organization elements

Scope of delivery

Under-table cabinet, complete, with 2 hinged keys and installation materials

Accessories

Roller set, organization elements

Recommended additional products:

System tables

Article No. K2-...

Primus One System under-table cabinets

Technical Data

Corpus	
Stärke	19mm
Thickness	Melamine-coated, resistant to organic solvents, weak acids, gasoline and oil
Color	Light gray RAL 7035
Casters	
Diameter	75mm
Design	4 double-swivel casters, 2 lockable, polyurethane running tread
Loading capacity	
Max. load capacity per partial pullout	25kg
ESD variant	
Design according to	DIN EN 61340-5-1 Part 5-1 Corpus volume-conductive
Dimensions	
Width	430mm
Depths	587mm
Height	191 / 550mm

Accessories

	Order number
Roller set: 4 double-swivel casters, 19mm Cover plate	K9-2R
Roller set ESD: 4 double-swivel casters, conductive	K9-2R ESD

Article No. K4-...

Primus One System Trays



Table with Storage element



Table with Functional shelf

Highlights

- Functional shelf steplessly height-adjustable and 30°C tiltable
- Functional front and rear side channel
- Functional shelf grooved at front and back
- Option to integrate LED lighting for storage element
- Option to integrate organization panel for storage element
- Storage element at each side for downward cable routing

Scope of delivery

Storage element with system carrier/functional shelf including installation materials

Recommended additional products

Vertical profiles, profile panels, organization panel with lighting

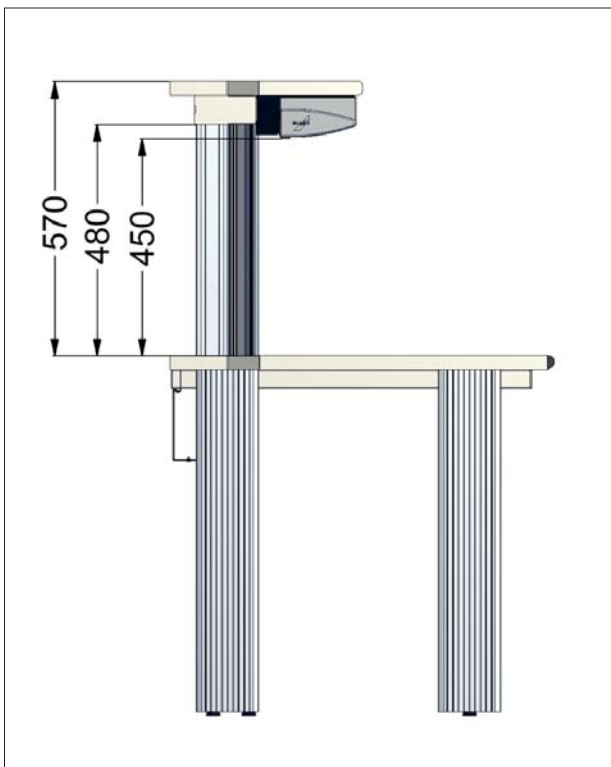
Article No. K4-...

Primus One System trays

Technical Data

Shelf panel	
Thickness	30mm
Finish	HPL laminate 0.8mm, glare-free, abrasion-resistant to EN 438, heat-resistant for short period
Color	Light gray RAL 7035
Loading capacity	
Weight load	80kg surface load up to 1600mm width 60kg surface load up to 2000mm width
ESD variant	
Table top	As standard design, but also volume-conductive
Design according to	DIN EN 61340-5-1 Part 5-1
Dimensions	
Widths	1200 / 1500 / 1600 / 1800 / 2000mm
Depths	400mm
Height	30mm (+ 60mm system carrier)

Dimensional sketch

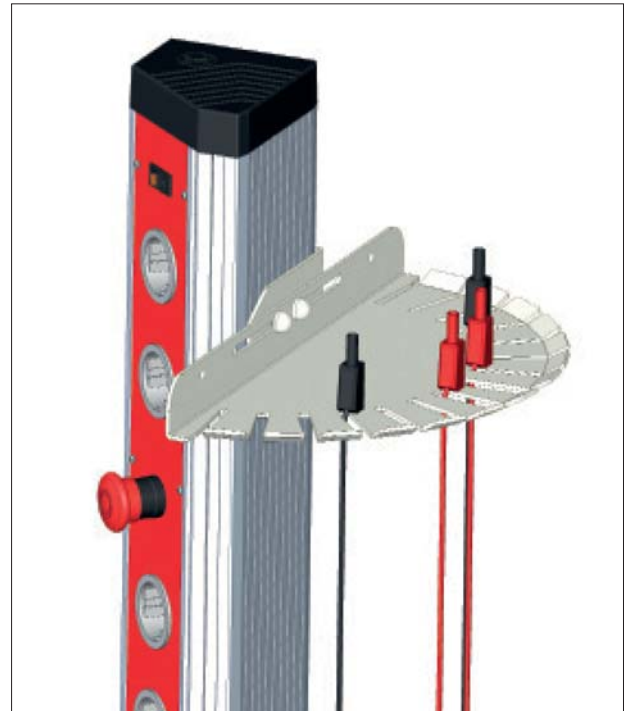


Article No. K9-9*

Primus One System Accessories



K9-9K



K9-9M

Technical Data

K9-9K Cable-hanging fixture, 2x
W = 220mm, D = 61mm, H = 120mm

K9-9M Measurement line holder, 14x
W = 380mm, D = 200mm, H = 25mm